

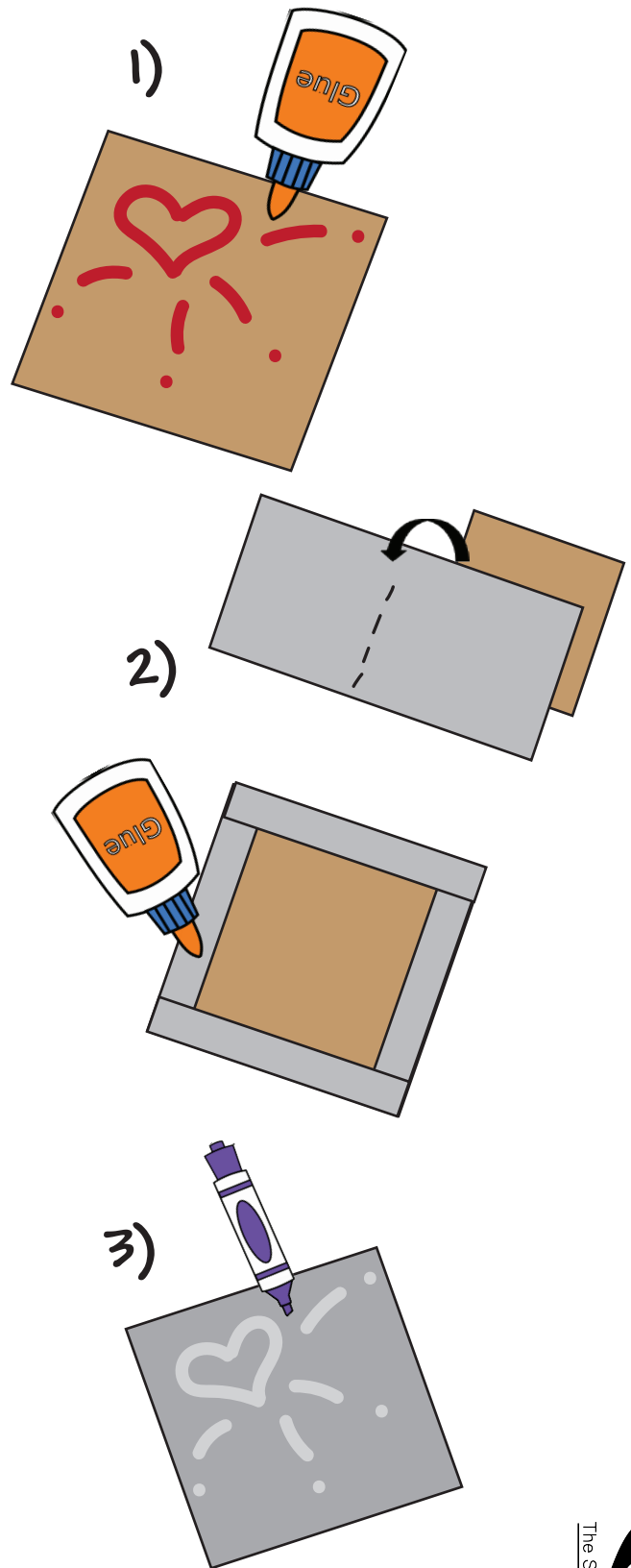
MAKE YOUR OWN IRON EMBOSsing

MATERIALS FOR THIS PROJECT:

- 14" x 8" piece of foil
- 6" x 6" Cardboard square
- Glue
- String
- Markers

TO CREATE YOUR EMBOSsing:

- 1) Create a design on your cardboard square by gluing down string into the pattern of your choice.
- 2) Fold foil in half long ways and stretch over your design. Glue foil that hangs over the edge to the back of your cardboard piece.
- 3) Flip over, using a marker press lightly on the surface of your foil around the "lines" you created with your string.
- 4) Color in the rest of your image and enjoy your new embossed design!



IRON MEN
THE ARTISTRY OF IRON IN SAMURAI ARMOR

NOW ON VIEW AT THE SAMURAI COLLECTION

THE ANN & GABRIEL
BARBIER-MUELLER
MUSEUM

